

NYLON CLAMP FOR DRAINAGE PIPES ON THREADED ROD IN CRAWL SPACE OR DROP CEILING

PATENT PENDING

NEW

FIX-RING VS®



Time savings during installation: confirmed and acknowledged by craftsmen!

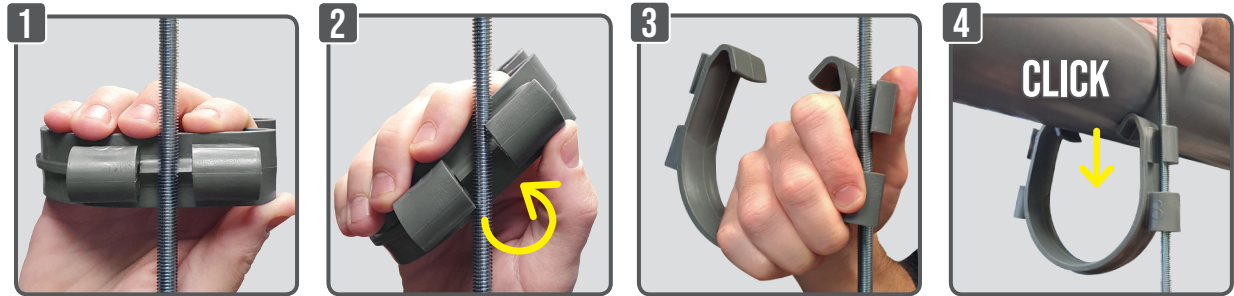


Fire resistance
Nylon UL94-V2



Ø (mm)	Ø (")	Reference	Condt
100	4"	R200530	Box of 10
		R200531	Bulk of 150
		R200532	Bag of 4

Ø (mm)	Ø (")	Reference	Condt
110	4 3/8"	R200535	Box of 10
		R200537	Bag of 4



Cross-sectional view
Curved shape to adapt to the slope

VERTICAL INSTALLATION



HORIZONTAL INSTALLATION

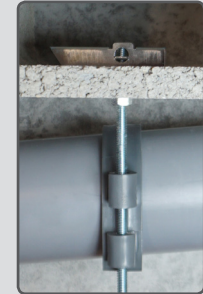




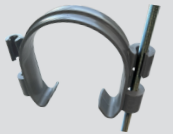
FIX-RING VS[®]



Slope adjustment by screwing / unscrewing



Also possible at the slab exit : installed upside down



Alternate installation method

Spacing : 130 mm

INSTALLATION UNDER CONCRETE SLAB



RAPIDO® - DIRECT INTO CONCRETE

Internal threaded	Reference	Quantity
M6 *	V103010	Box of 100
M8	V103030	

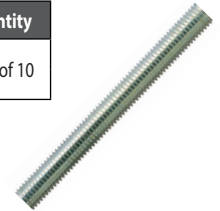


Approval*
in progress

THREADED ROD

1 METER

Threading	Reference	Quantity
M6	A509080	Pack of 10
M8	A509090	



INSTALLATION UNDER HOLLOW BLOCKS



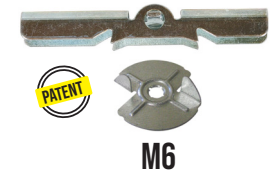
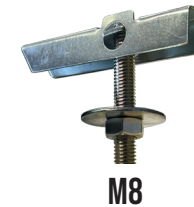
TOGGLE M8 + WASHER + NUT

Internal threaded	Reference	Quantity
M8	A220005	Box of 10

TOGGLE M6 + RAPID WASHER

Internal threaded	Reference	Quantity
M6	A220024	Box of 50

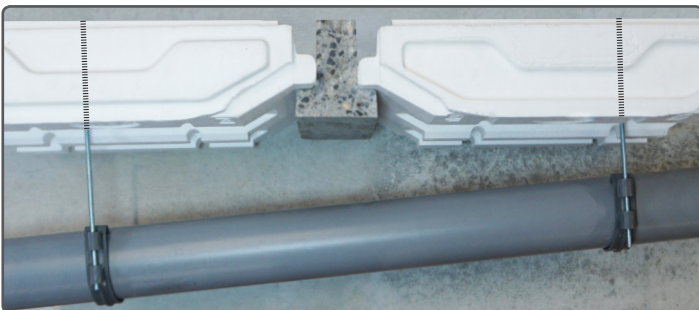
Washer
+ nut provided



M8

M6

INSTALLATION UNDER POLYSTYRENE HOLLOW BLOCKS



Top view
concrete slab

THREADED WASHER

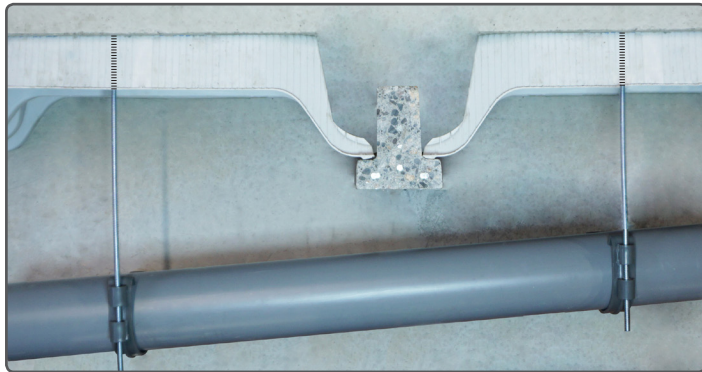
Internal threaded	Reference	Quantity
M6	A150260	Box of 20
M8	A150270	



Installation over the concrete slab :
1 - Drill through the slab and the polystyrene
2 - Lower the threaded rod with the washer

INSTALLATION UNDER PLASTIC HOLLOW BLOCKS

LOURED CONCRETE SLAB



RAPIDO® - DIRECT INTO CONCRETE

Internal threaded	Reference	Quantity
M6 *	V103010	Box of 100
M8	V103030	



UNPOURED CONCRETE SLAB



THREADED WASHER

Internal threaded	Reference	Quantity
M6	A150260	Box of 20
M8	A150270	



- Installation over of the plastic hollow blocks :
- 1 - Drill through the plastic hollow blocks
 - 2 - Lower the threaded rod with the washer



Distributor